



Fees:

- Members: \$125
- Non-members: \$175

Price includes the birthday child and 20 guests.

Additional Children \$10 per child.
Maximum: 25 children

The fee for the party is due when the rental agreement is signed. If additional children are added (above the twenty), the balance can be paid the day of the party.

Forty-eight (48) hours notice is required to cancel a party.

Parties need to be booked 2 weeks in advance...

Food Options

The YMCA has a partnership with Chick-Fil-A if you would like food provided. Please contact the following for a list of prices:

Chick-Fil-A
(near Wal-mart)
704-481-8110
(available Fridays and Saturdays only)



Dover Foundation YMCA
411 Cherryville Highway
Shelby, NC 28150

Phone: 704-484-9622
Fax: 704-669-3605
www.ymcclevelandcounty.org

YMCA Mission:
Helping all people reach their God given potential in spirit, mind and body.

Dover Foundation
YMCA

Birthday Party Packages



To reserve a birthday party time,

Please sign up at the Welcome Center

ALL PARTIES INCLUDE:

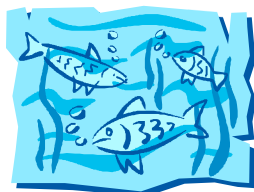
- A “I had my Birthday Party at the YMCA” T-Shirt.
- A host that will set up and conduct the activities you choose for your party.
- One (1) hour in the party room to enjoy food, cake and open gifts.
- Invitations
- Plates, cups, napkins and utensils
- Balloons
- Ice Cream

Party days & times:

Friday: 6-8:30 pm

Saturday: 11-1:30 pm & 2-4:30 pm

Sunday: 2:30—5 pm



Our 52-foot obstacle course!

ADDITIONAL OPTIONS

- Dance Theme Parties (a trained dancer will teach a routine to party participants)
- Sports Theme Parties (an experienced athlete will facilitate a game of basketball or soccer with party participants)

To get more details contact:
Shayne P. Collins
Director of Family Programs
(704)669-3634

Choose the theme for your party...the possibilities for fun are endless!!!

We look forward to celebrating... with you at the YMCA!

CUSTOMIZE YOUR PARTY WITH THESE ACTIVITY OPTIONS:

CHOOSE ANY TWO (2) OF THE FOLLOWING OPTIONS TO MAKE YOUR PARTY A BLAST:

- 45 minutes on the inflatable obstacle course (this option is for children who are between the ages of 5 and 12, and at least 30” in height)
- 45 minutes in the indoor pool (a lifeguard will be provided)
 - 45 minutes in KidZone (Dance-Dance Revolution, ping-pong, foosball and use of the interactive, light-up Sports Wall)
- 45 minutes in the Childwatch area, including use of the playground and arts and crafts time (this option is for children 5 years of age and under)

